

# MPLS Layer 2 Virtual Circuit Module

(draft Martini/Ethernet over MPLS)  
SKU ZOS-LDP-MTNI

## Overview

IP Infusion's ZebOS® Advanced Routing Suite (ARS) MPLS Layer 2 Virtual Circuit (VC) Module is an implementation of *draft-martini-l2circuit-trans-mpls-08.txt* and *draft-martini-l2circuit-encap-mpls-04.txt* and is an extension to the existing ZebOS LDP Module. MPLS Layer 2 VC extends the customer LAN across an MPLS network. Ethernet frames from the customer LAN are first encapsulated with a VC label and then sent over an MPLS LSP tunnel to the remote LAN (see the Figure 1 below). The egress Provider Edge (PE) router pops the VC label and delivers Ethernet frames to the remote customer LAN.

The ZebOS MPLS Layer 2 Module requires extensions to existing ZebOS LDP, ZebOS NSM (Network Services Module), and ZebOS MPLS Forwarder. These extensions are already included in the NSM, MPLS forwarder, and LDP.

The ZebOS MPLS Layer 2 Virtual Circuit Module is a control plane software module that can also be integrated into a range of network processor environments and is pre-configured to support many popular operating systems. The ZebOS ARS modules are written in the ANSI C programming language.

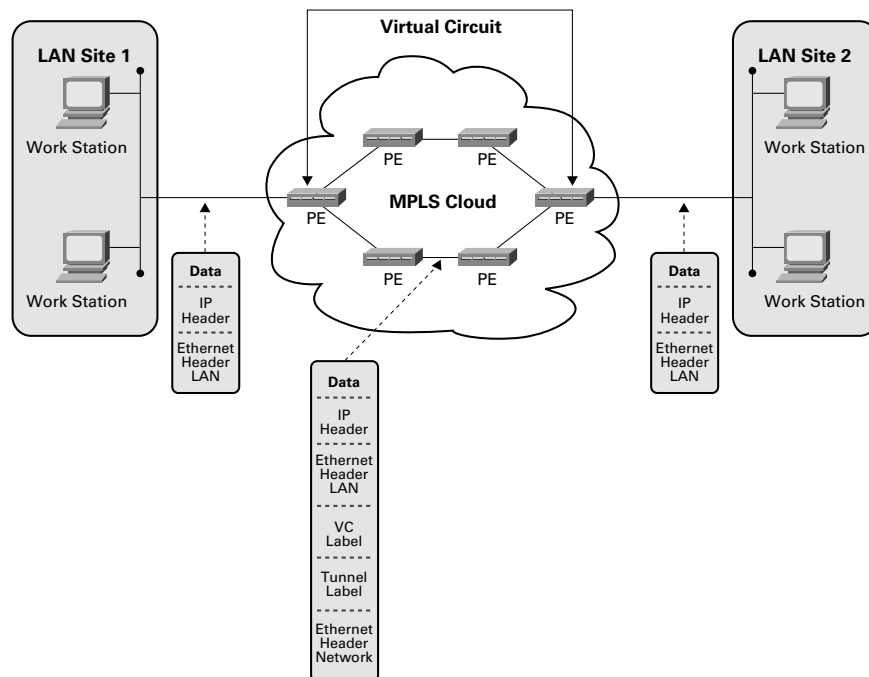


Figure 1

## Features

- IETF draft compliant implementation
- Support for Ethernet encapsulation
- Command Line Interface (through ZebOS NSM)
- Forwarding on Linux and Ethernet only

## Benefits

- Stable, robust implementation of draft Martini/Ethernet over MPLS
- Fully integrated with ZebOS NSM and ZebOS LDP Module
- Support for scalable MPLS Layer 2 Virtual Circuit
- Generic API to integrate with MPLS Forwarder Module
- Interoperability with popular MPLS switching platforms
- Delivers significant time-to-market advantage for customer
- Platform-independent implementation

## Requirements

SKU	PRODUCT NAME
ZOS-NSM	ZebOS Network Services Module
ZOS-LDP	ZebOS Label Distribution Protocol Module
ZOS-MFE	ZebOS MPLS Forwarder (Optional)
ZOS-VPLS	ZebOS VPLS Module - Optional for VPLS support

## Standards Supported

STANDARD	FUNCTION
Draft-martini-l2circuit-encap-mpls-04	Encapsulation Methods for Transport of Layer 2 Frames over IP and MPLS Networks
Draft-martini-l2circuit-trans-mpls-08	Transport of Layer 2 Frames Over MPLS

## Supported Operating Systems for the Control Plane

- Linux
- MontaVista Professional Edition
- NetBSD
- VxWorks®

All environments require an MPLS Forwarder. An MPLS Forwarder for Linux is available from IP Infusion.

## Standard Deliverables

- Source Code (written in ANSI compliant C)
- Installation and Configuration Guide
- Command References
- Developer Guides



**IP Infusion Inc.**  
**125 South Market Street**  
**9th Floor**  
**San Jose, CA 95113**  
**tel: 408.794.1500**  
**fax: 408.278.0521**  
**sales@ipinfusion.com**  
**www.ipinfusion.com**

© Copyright 2005 IP Infusion Inc. All Rights Reserved.  
ZebOS and IP Infusion are registered trademarks and the ipinfusion logo is a trademark of IP Infusion Inc. All other brands or product names are trademarks or registered trademarks of their respective holders. All specifications within this document are subject to change without notice. Contact Sales for current feature availability.

Part No. 0180715-01/2005